



PROJECT		REF		REV	ITEM CODE	
LOCATION		DATE			PAGE	

SANITARY WARE SPECIFICATION SHEET

Item Descriptions	Stern (Israel) "Ever HD" Chrome plated deck mounted automatic sensor hand dryer ; powered by 110V-120/220V-240VAC	<p>Illustration/ Drawing</p>
Dimensions	L216 x W42 x H205 mm	
Model	Ever Hand Dryer	
Code Number	230510	
Finish	Chrome Plated	
Supplier	Acme Sanitary Ware Co. Ltd Mr. Eric Wong/ Mr. Don Yuen	
Contact Tel/Fax	(852) 2388-7171 / (852) 2710-8012	
E-mail	acme@acmesanitary.com.hk	
Website	www.acmesanitary.com.hk	

Ever HD Ref # 230510

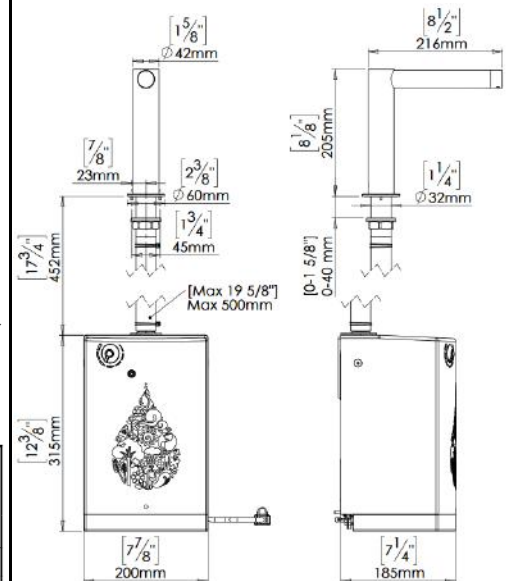
Touch-free electronic hand dryer for deck mounted installations. Powered by 110V-120/220V-240Vac. Hand dryer will automatically shut off after being used for more than 60 seconds. Sensor settings can be customized by remote control.

Application:

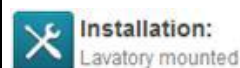
Touch-free electronic hand dryer. The hand dryer is activated automatically, the user places hands under the opening and the IR sensor sends a signal to the electronic unit air sending out air.

Use:

High speed, high-quality hand dryer with a sleek, vandal High speed, high-quality hand dryer with a sleek, vandal-resistant design. For use in transport facilities, schools, stadiums, sports arenas, and public washrooms.

**TECHNICAL SPECIFICATIONS**

ITME CATEGORY	PERFORMANCE DATA
Operating Voltage	110-120 Vac, 50/60 Hz, 12.2-13.4 A, 1.34-1.6 Kw 220-240 Vac, 50/60 Hz, 6.1-6.7 A, 1.34-1.6 Kw
Motor Thermal Protection	Auto Resetting Thermostat turns unit off, 120V at 135 °C (275 °F), 240V at 95 °C (203 °F)
Heater Element	450-900 W, adjustable
Heater Thermal Protection	Auto Resetting Thermostat turns unit off at 85 °C [185 °F] Thermal fuse cuts unit off at 142 °C [288 °F]
Standby by Power	0.3-0.4 W
Circuit Operation	infrared Automatic, self adjusting
Sensor Range	3" to 18" [80 mm to 450 mm], Adjustable; standart 8.66" [220 mm ± 20 mm]
Timing Protection	60 seconds auto shut off
Drip proof	IP 21



YouTube Stern Trendy Duo Ever HD

<https://www.youtube.com/watch?v=PBT1VM85HWc>



SPARE PARTS LIST

PACK CONTENTS

EVER HD

1 x Hand dryer and attachments



1 x Allen key 2.5mm



1 x Allen key 3mm



1 x Allen key 7mm

Hose + 2 clamps



4 x Screws & Ancors

1 x Hand dryer unit

Power supply cord with plug (plug is optional according to the region)

Note: In order to locate the relevant spare part, please check the corresponding parts and part number in the drawing. Minimum order quantity will be required.

** All information of the above is for the reference only. No prior notice is made if any changes.*



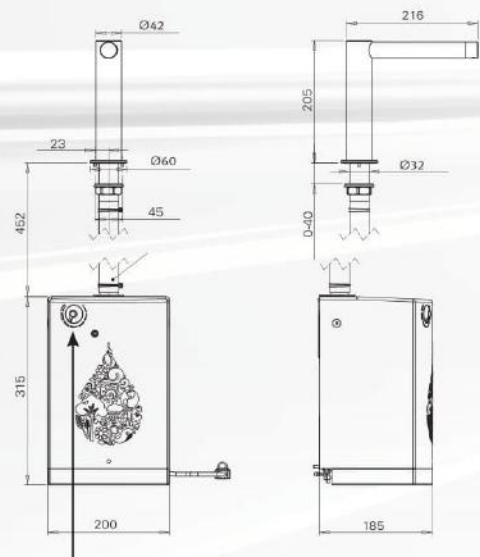
EVER HD

Electronic deck mounted hand dryer operated by IR sensor.

Touch free electronic hand dryer for deck mounted installations. Powered by 110V-120/220V-240VAC. Hand dryer will automatically shut off after being used for more than 60 seconds. Sensor settings can be customized by remote control.

Advantages:

- Installed above basin preventing hand wash drips to floors and counters
- HEPA filter for added hygienic properties
- Full brass body or stainless steel 316 material
- Variety of colors and special finishes available
- Matching touch free faucet and soap dispenser
- Long lasting, durable and vandal resistant
- Air flow intensity adjustable by external button
- Adjustability with remote control: security time, detection range, delay out
- On/Off function to perform cleaning



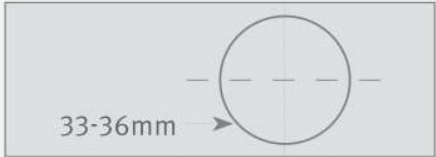
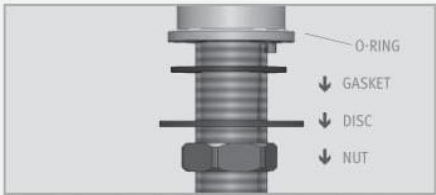
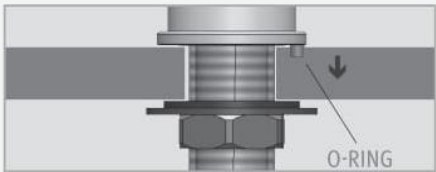
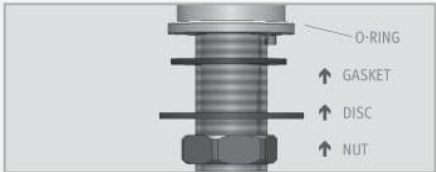
Airflow intensity adjustment button

MODEL	CODE	POWER
EVER HD	230510	110V-120/220V-240VAC

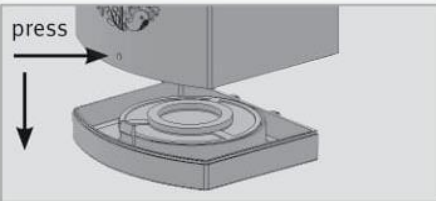
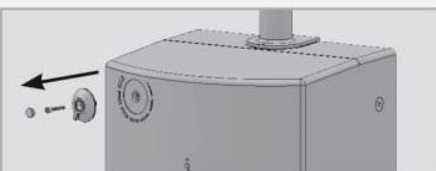



INSTALLATION

STEP 1 –INSTALL THE DECK UNIT - EVER HD

Recommended hole size	
1 Remove the hexagonal nut, the disk and the gasket. Do not remove the O-ring from the base of the HD.	
3 Place the HD with O-ring into the hole in deck or lavatory. Make sure the O-ring is located between the deck or lavatory and the bottom of the HD.	
2 Slide the gasket, disk and hexagonal nut over the flexible hose and secure the HD into place.	

STEP 2 –INSTALL THE MOTOR UNIT - ALL MODELS

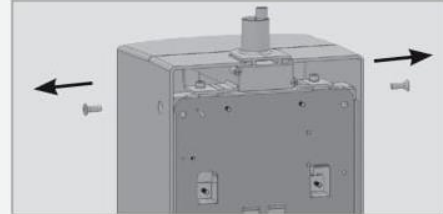
1 Remove the filter cover by releasing it by pressing the button	
2 Remove knob cover using a flat screw driver. Remove screw using Allen key. Remove knob.	
3 Loosen the lower locking bolt with a 3 mm Allen Key.	



INSTALLATION

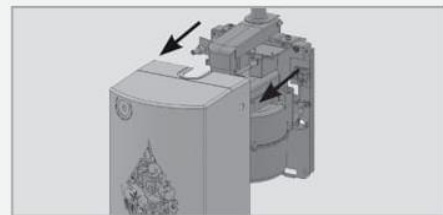
4

Remove the 2 locking screws located on either side of the motor unit using Allen key supplied.



5

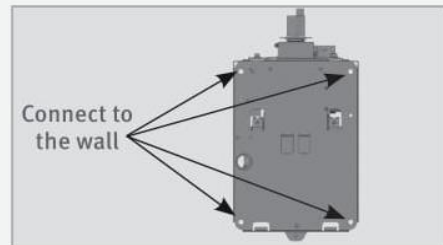
Remove the cover of the motor unit.



Note: To connect a hardwire cable or to change the existing power cable, See relevant section below.

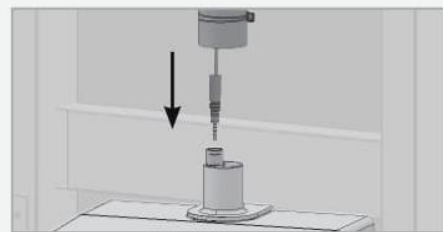
6

Position unit at the end of the air hose.
Connect the unit firmly to the wall.
Note: Hose length can not be cut.
Note: make sure the bottom of the unit has a clearing of a minimum 10 cm (4") from any obstacle.



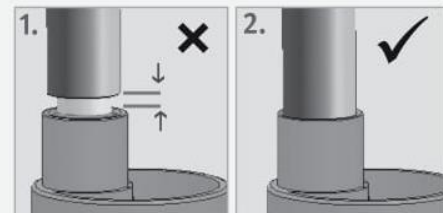
7

Attach the connector.



8

Please note that since the connector is water proof, some friction might apply.
1. O-RING VISIBLE – NOT CONNECTED PROPERLY
2. ONLY THE GROOVES ARE VISIBLE – CONNECTED PROPERLY



9

Reassemble cover, knob, filter housing.
Connect the electricity (cable not included).





INSTALLATION

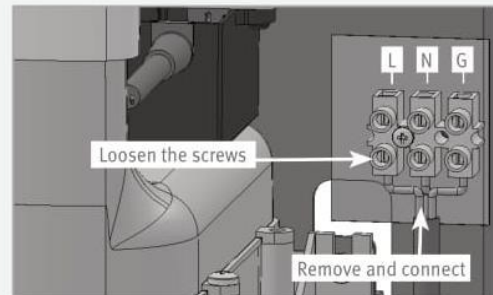
CONNECTING OPEN WIRE CABLES (NOT PROVIDED)

1

Loosen the screws to remove the existing cable.

2

Connect the hardwire cable.



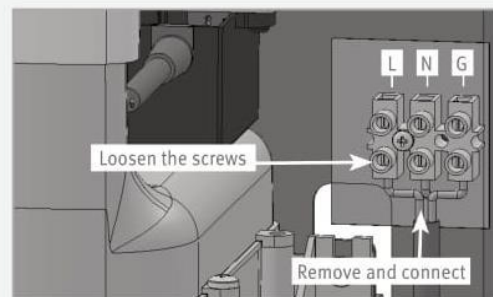
CHANGING THE CABLE

1

Loosen the screws to remove the existing cable.

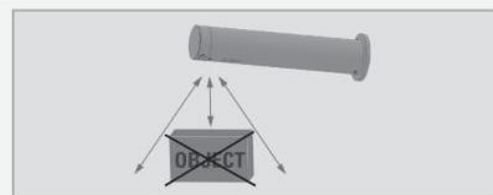
2

Connect the the preferred cable.



OPERATING THE HAND DRYER

Before proceeding, check that no objects are in front of the sensor aside from the washbasin.



1

Remove the sticker covering the sensor eye wait 15 seconds for the sensor to set up.



2

Activate the hand dryer by placing hand below the sensor unit
Remove hands when finished drying.

3

Air power can be increased or decreased by adjusting the power selector knob located on the motor unit.

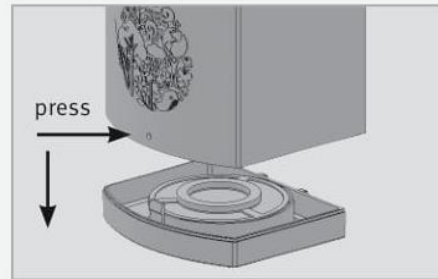




INSTALLATION

CHANGING THE FILTER

Press button to release the filter housing. remove and clean or replace filter. Click the filter housing back into place.



MAINTENANCE

- a. Regular cleaning of the hand dryer is recommended to ensure optimum functioning of the dryer.
- b. Any access to the dryer will be done only after it has been disconnected from the power supply.
- c. Clean the dryer with a damp cloth.
- d. Do not squeeze the cloth.
- e. Do not rinse the dryer with a water hose.
- f. Do not use any material that is worn or scratched (iron, scotch, etc.).
- g. Do not use any aggressive cleaning agent (acid or base).
- h. No cleaning is required for internal parts.
- i. Be sure to clean the motor unit filter every few months (depending on the nature of use) replace if necessary.